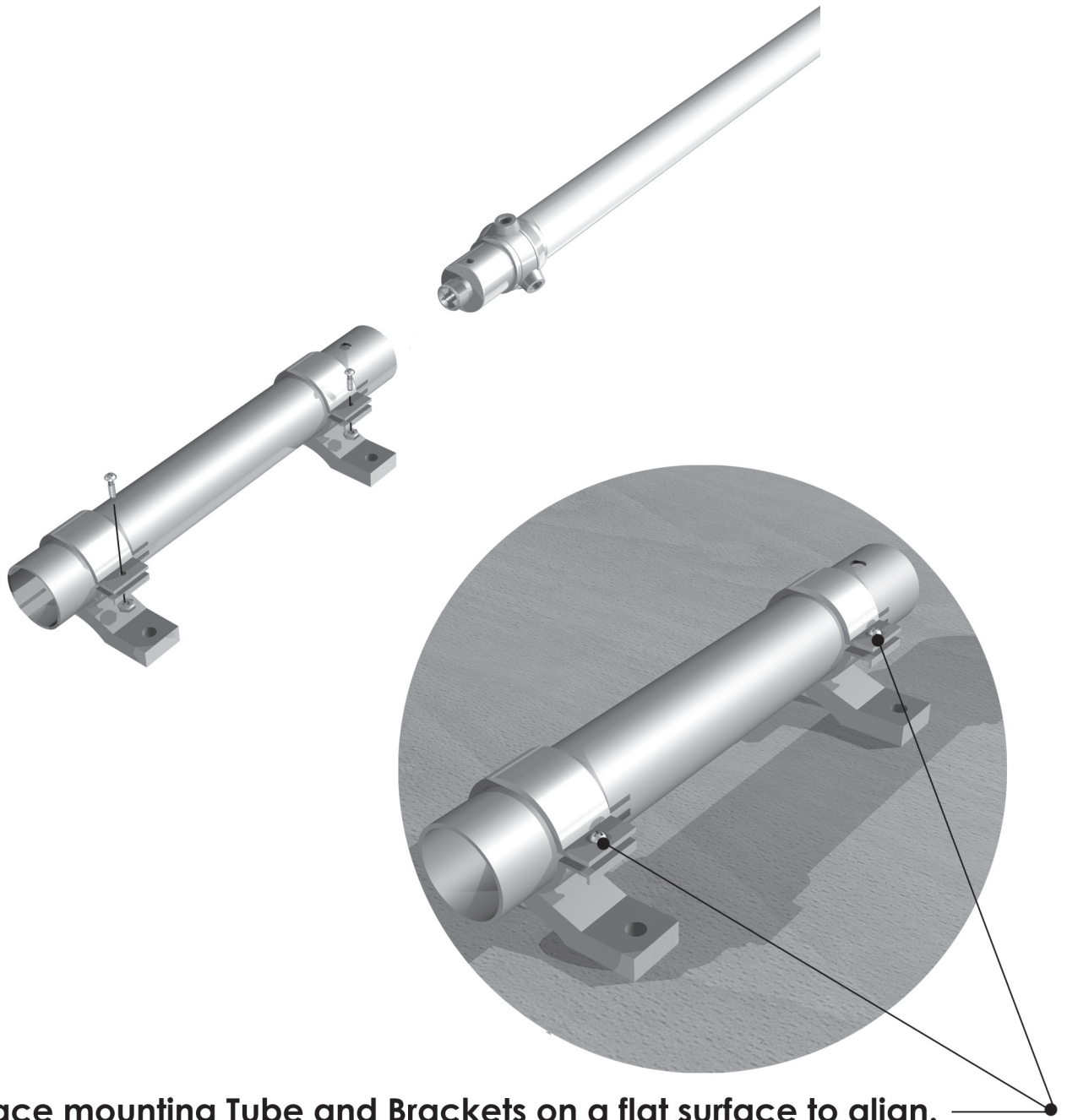


# QUICK START GUIDE

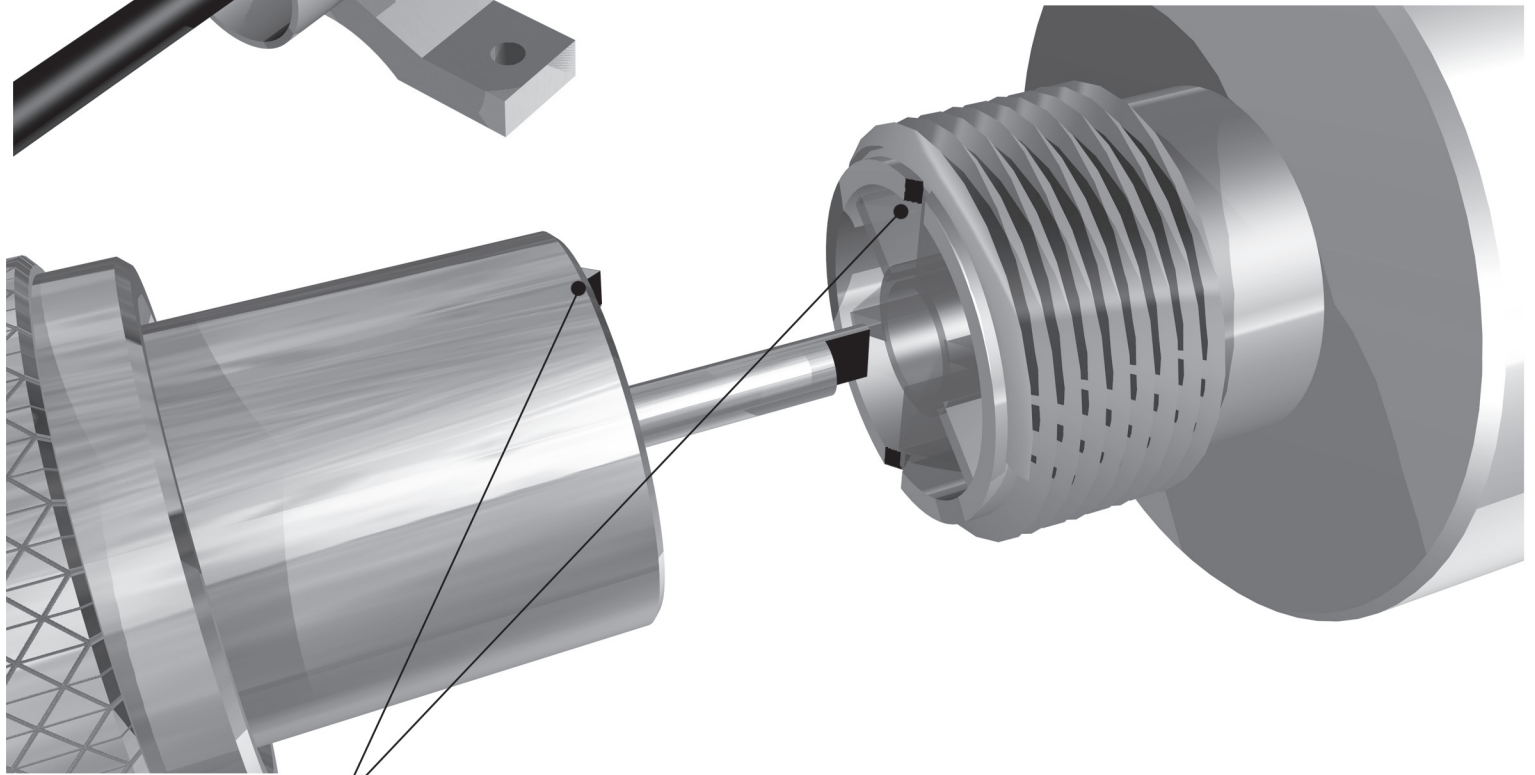
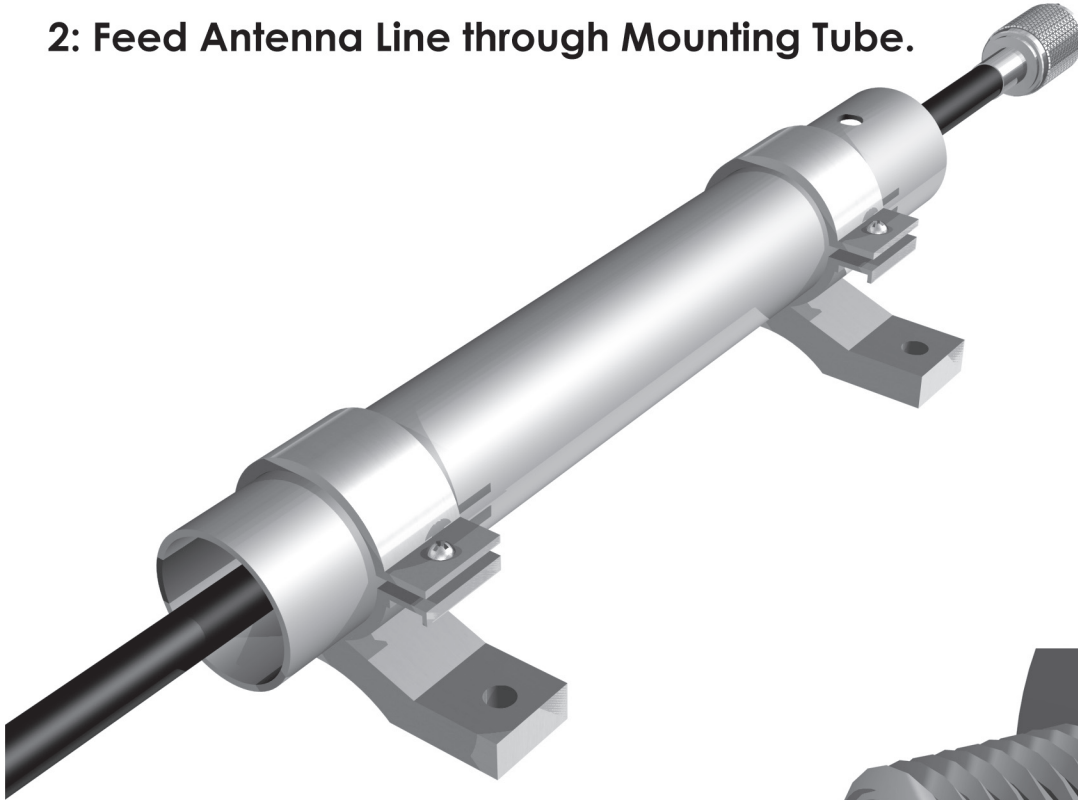
## ANTENNA ASSEMBLY:



**1: Place mounting Tube and Brackets on a flat surface to align.  
Then tighten Screws.**

# QUICK START GUIDE

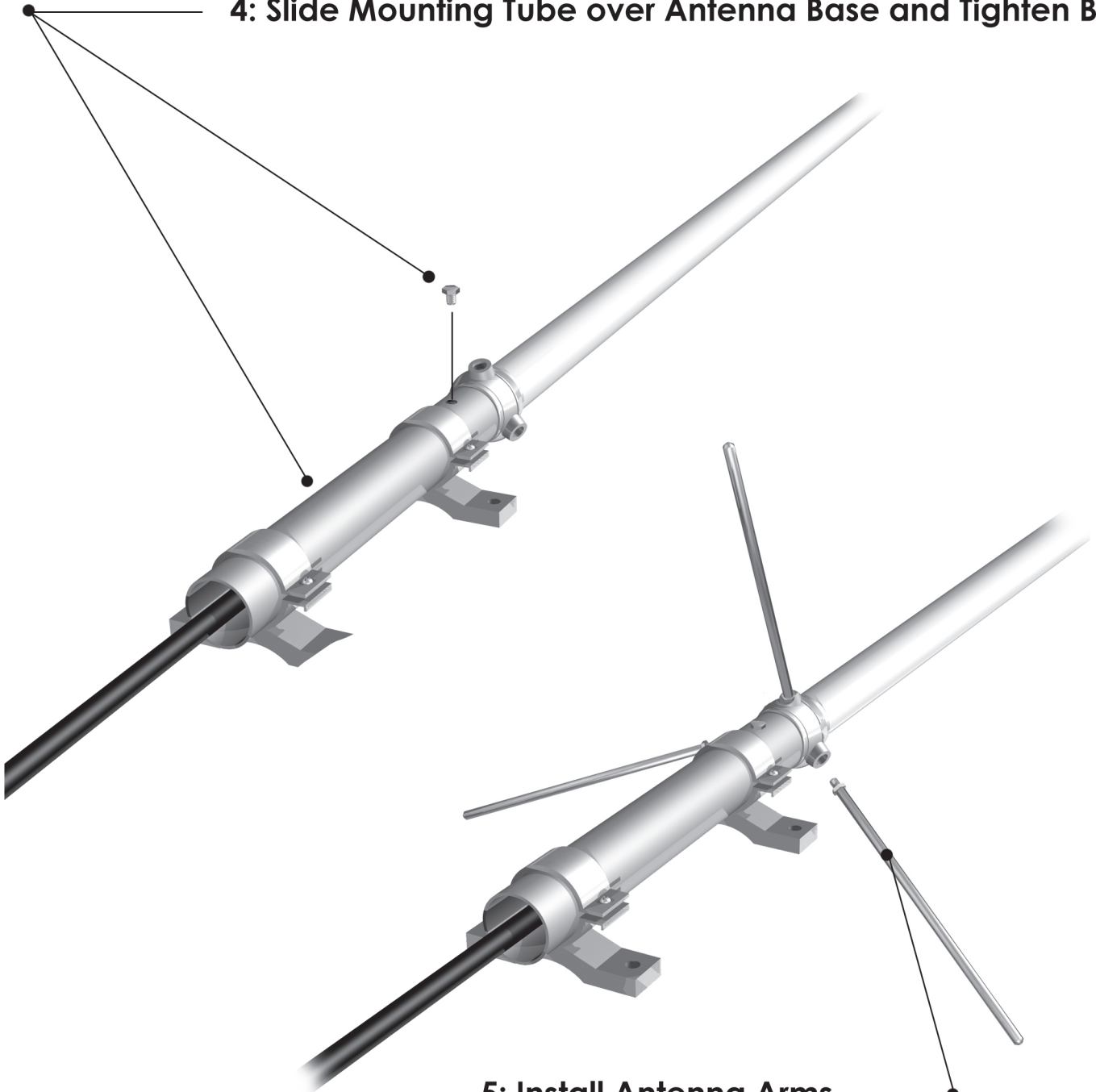
2: Feed Antenna Line through Mounting Tube.



3: Be sure to Align notches before tightening Threads.

# QUICK START GUIDE

4: Slide Mounting Tube over Antenna Base and Tighten Bolt.



5: Install Antenna Arms.

# QUICK START GUIDE

6: Use U Bolts to Attach to an existing Poll.



KRONOSYNC SETUP

# QUICK START GUIDE

INSERT ANTENNA LINE . PUSH RING AND TURN 45° CLOCKWISE





