



QUICK START GUIDE

LOADING SOFTWARE



LOAD THE INCLUDED SD SOUND CHIP:



LOAD SOFTWARE CD INTO DRIVE AND FOLLOW THESE STEPS:

3 CLICK ON MY COMPUTER > CLICK CD DRIVE > CLICK SETUP >

OPEN > OK > FOLLOW INSTUCTIONS STEPS > FINISH > →

THE INNOVATION WIRELESS ICON WILL LOAD ONTO YOUR DESKTOP

4 YOU MAY NOW REMOVE CD FROM DRIVE

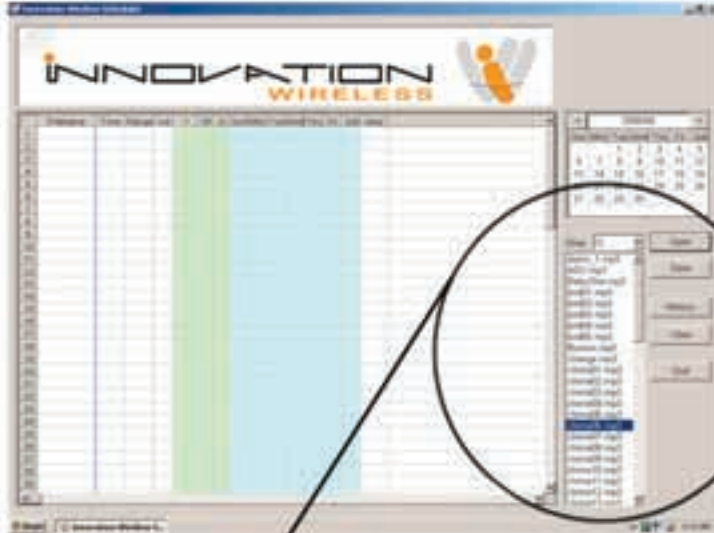
5 DOUBLE CLICK THE ICON TO OPEN YOUR SCHEDULING PROGRAM →



2

QUICK START GUIDE

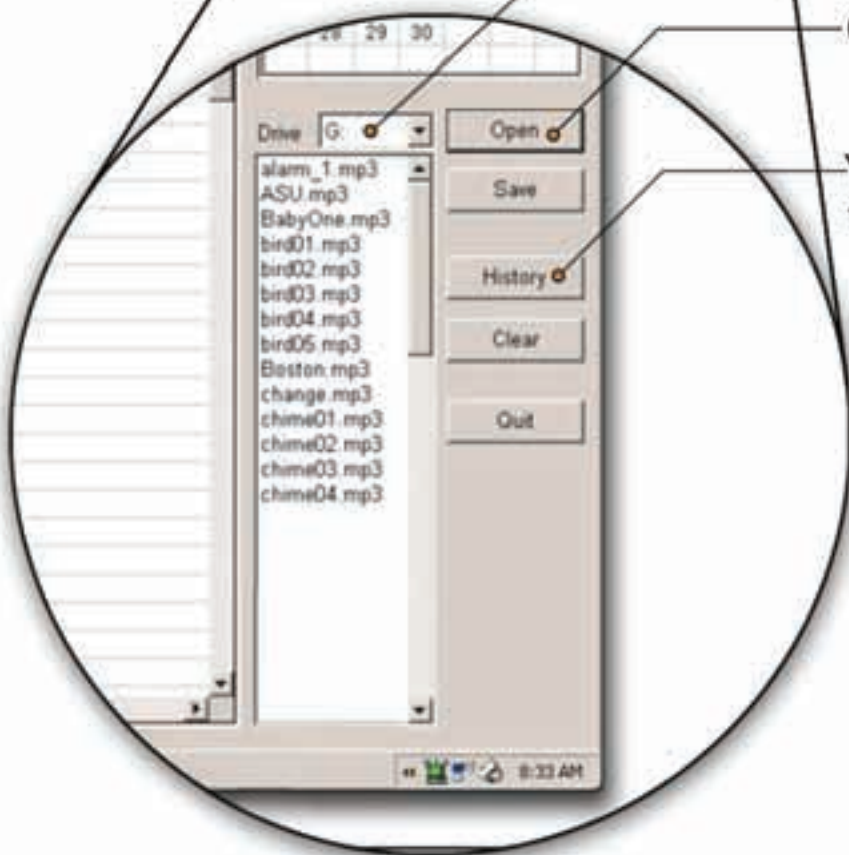
Opening Mp3 Files



Select the Drive with the SD Card

Click Open

You may also Click History for the preloaded Mp3 Files *

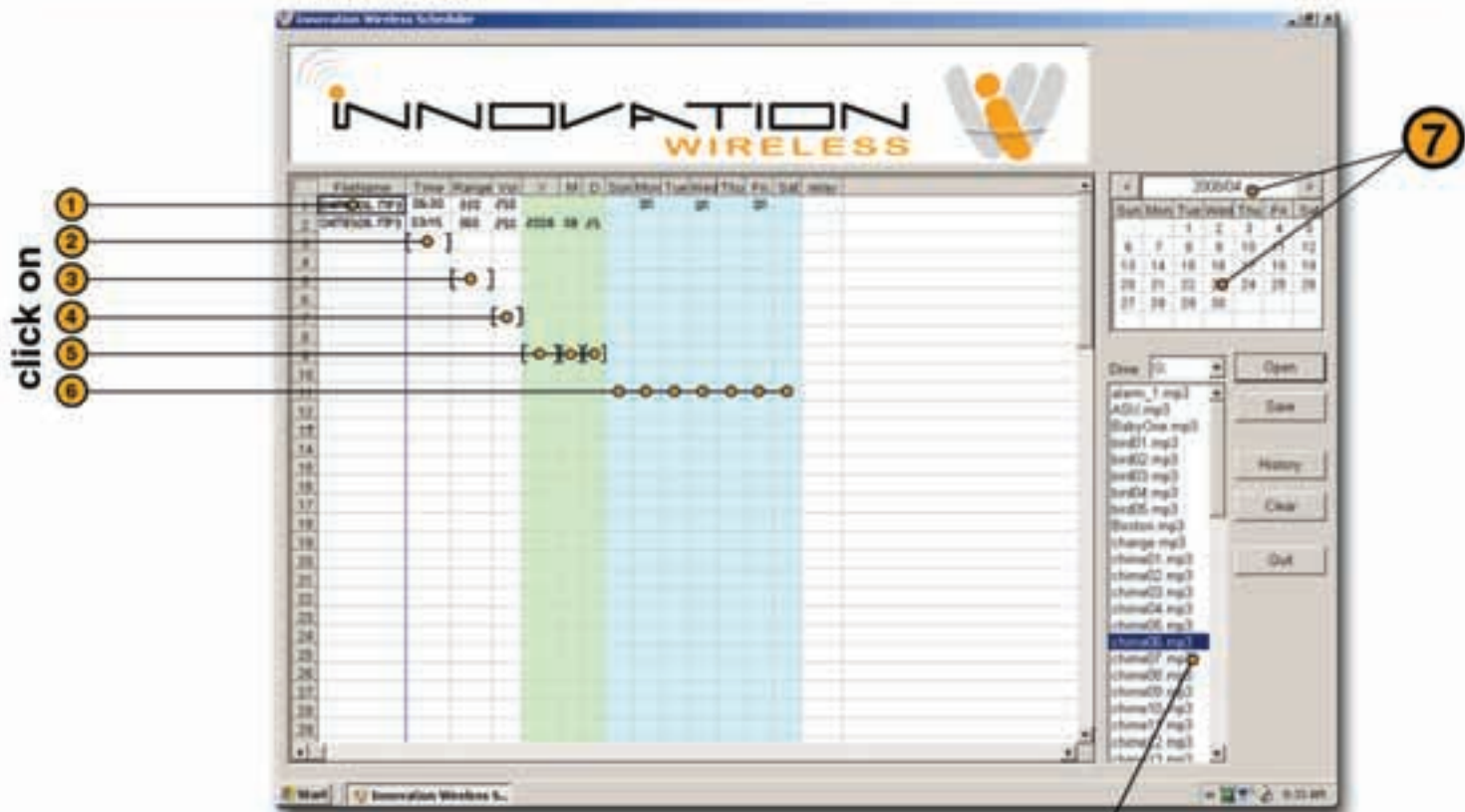


***YOU MAY ALSO ADD YOUR OWN MP3'S TO THE SD CARD, BUT IT MUST BE RENAMED USING ONLY 7 CHARACTERS**
Example: happybirthday.mp3 to happybd.mp3



QUICK START GUIDE

Schedule Programming Guide

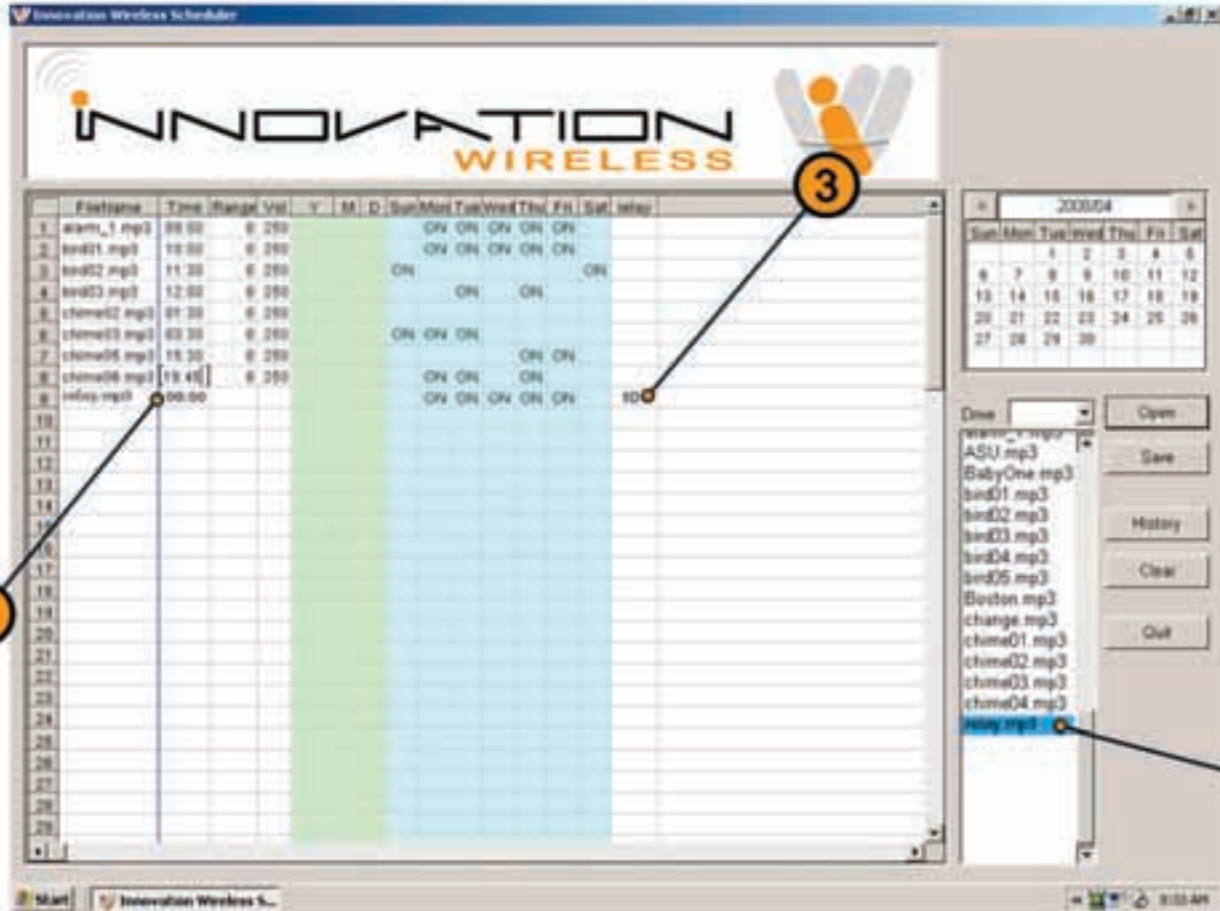


- 1 Click on File Name to Highlight and Choose Chime from List
- 2 Set Time (use 24hr Clock)
- 3 Set Range (Length of mp3 File) in Seconds
- 4 Set Volume: 250 Max
- 5 You may set a selected - Year / Month / Day
- 6 Choose Days by Toggeling ON / OFF
- 7 You may also set a Specific Date from the Calender

24HR	12HR
01:00	01:00am
02:00	02:00am
03:00	03:00am
04:00	04:00am
05:00	05:00am
06:00	06:00am
07:00	07:00am
08:00	08:00am
09:00	09:00am
10:00	10:00am
11:00	11:00am
12:00	12:00noon
13:00	01:00pm
14:00	02:00pm
15:00	03:00pm
16:00	04:00pm
17:00	05:00pm
18:00	06:00pm
19:00	07:00pm
20:00	08:00pm
21:00	09:00pm
22:00	10:00pm
23:00	11:00pm
24:00	12:00pm

4 QUICK START GUIDE

TO SET UP YOUR RELAY
(FOR YOUR DEFAULT ALARM)



- 1** To trigger your default alarm sound, choose relay.mp3
- 2** Set your Time here
- 3** Set the duration here in Seconds

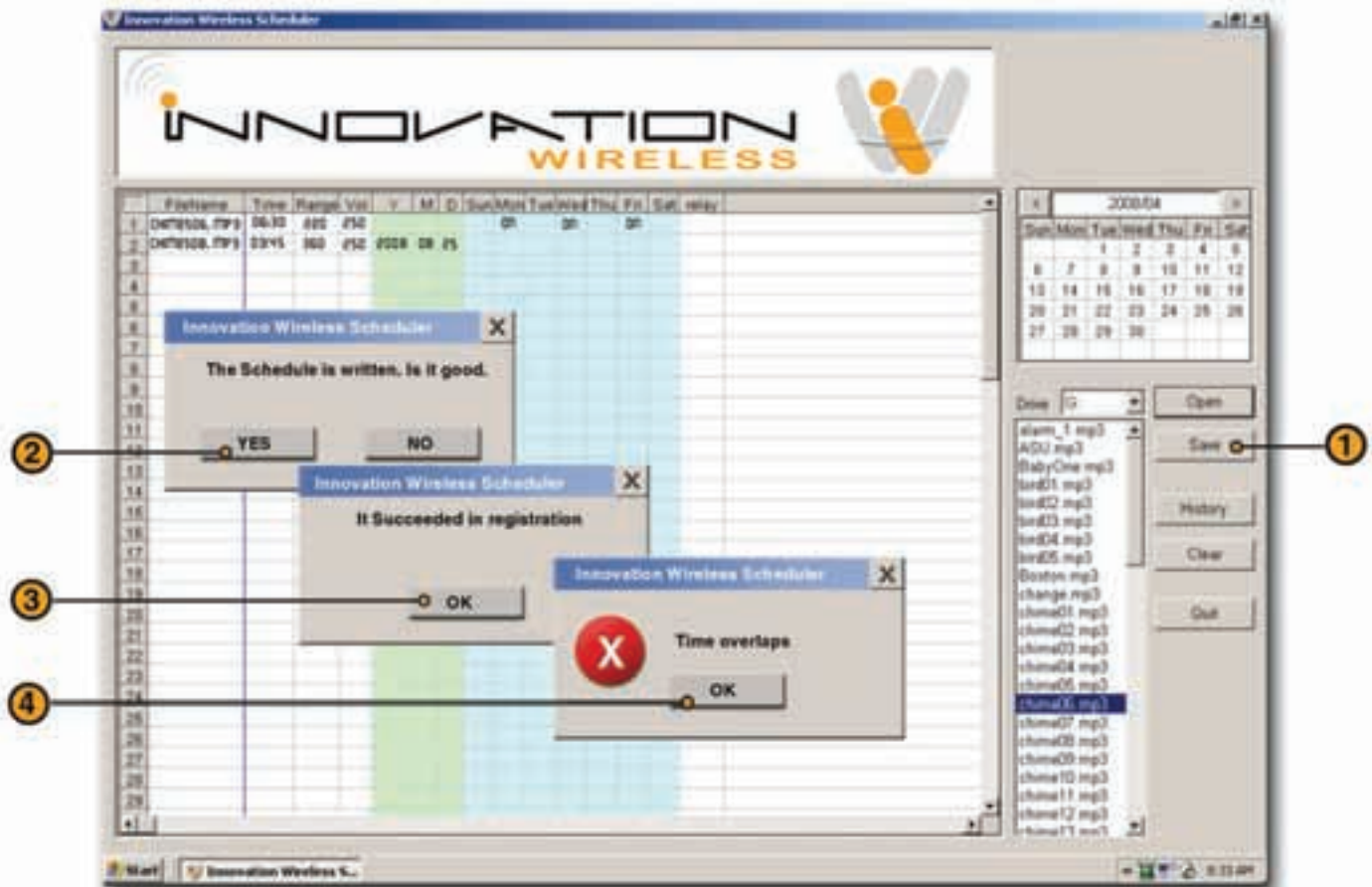
Attaching your Alarm Cables to **NC** will close the circuit for 10 Seconds

Attaching your Alarm Cables to **NO** will open the circuit for 10 Seconds



QUICK START GUIDE

Schedule Programming Guide



- ① Once you have the Schedule complete. Click **SAVE**
- ② You will get this window. If good Click **Yes**.
- ③ If there are no conflicts. You will get this window. Click **OK**.
- ④ If you have any **Overlaps in Time**, Click **OK** and correct the error.

6

QUICK START GUIDE

SD CARD INSTALLATION

Once your Schedule is complete, remove the SD Card and insert into the Tone Generator. You must now reset your Tone Generator by either unplugging the Power Supply, or by pressing the Reset Button.

When the Tone Generator Reception Status Light Blinks **Green**, you're ready.



7

QUICK START GUIDE

Be sure the Channels on the Transmitter and the Controller Match

